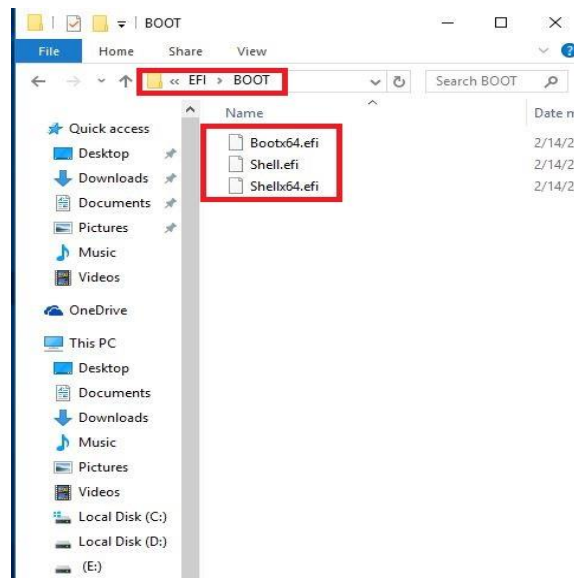


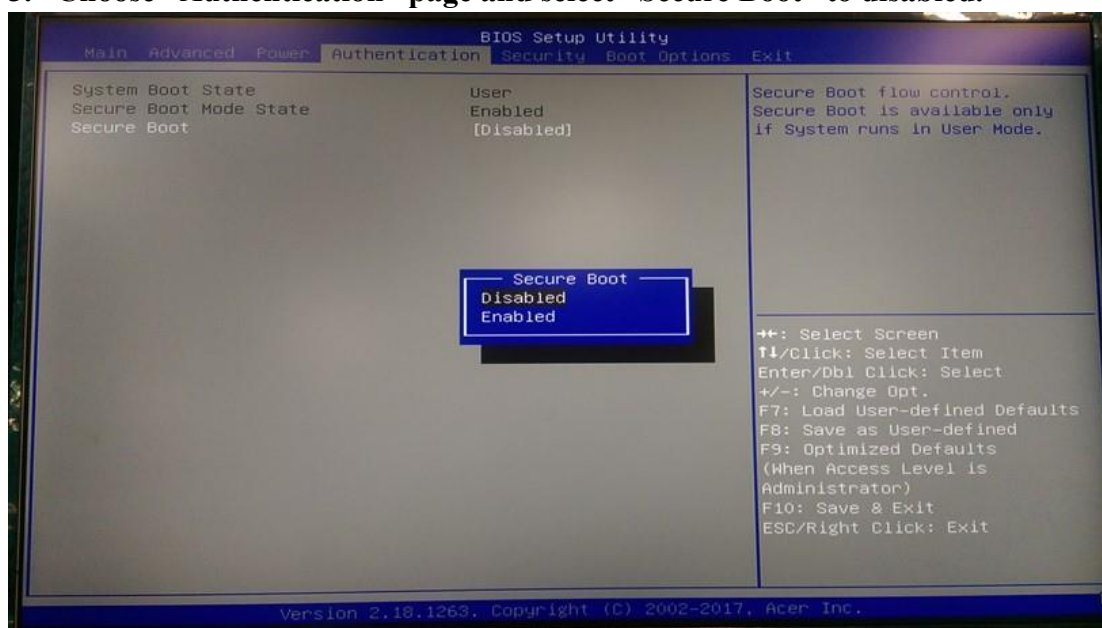
EFI Flash SOP

v1.9

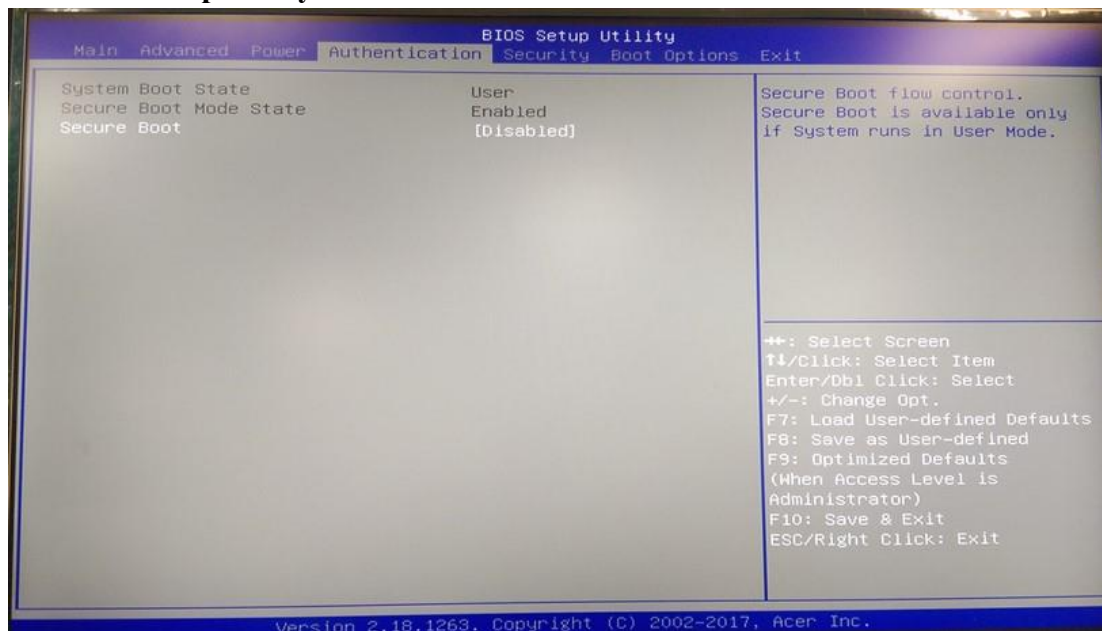
1. Please put the EFI shell relating file to a USB thumbdrive and the file path need to be follow as below. (E:\EFI\BOOT, E: is an example. Please check the path of your USB thumbdrive) –This is for EFI bootable device.



2. Power on the system. When you see the LOGO or hear one short beep, please press “Delete” to enter BIOS Setup Utility.
3. Choose “Authentication” page and select “Secure Boot” to disabled.

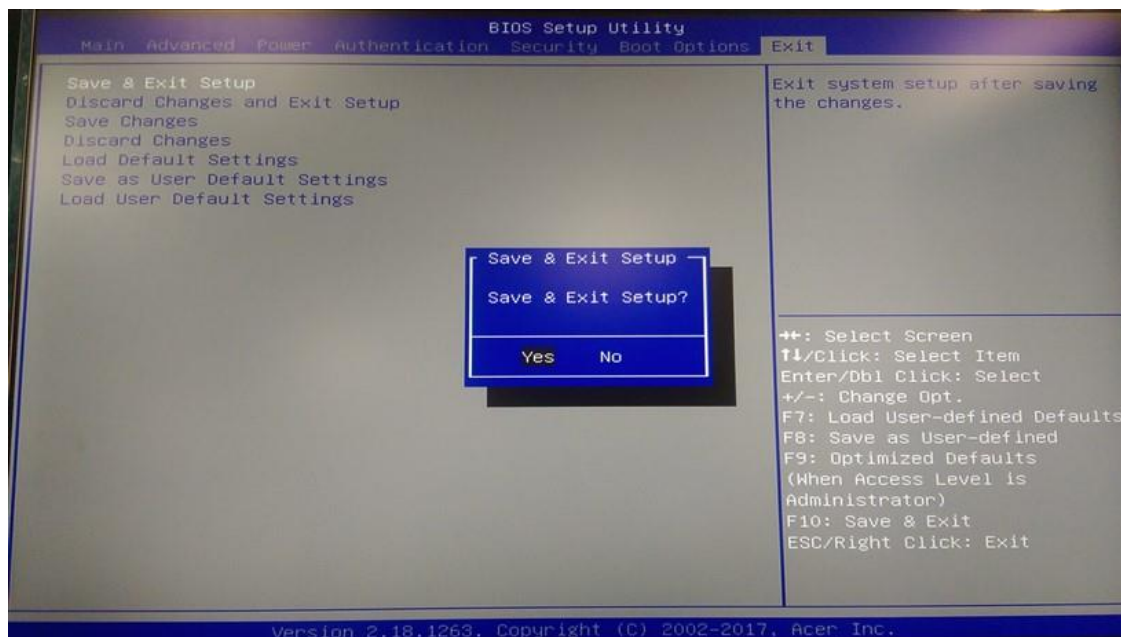


4. BIOS Setup Utility will disable “Secure Boot”



5. Choose “Exit” page and select “Save & Exit Setup” and press “Enter”.

6. Select “Yes” to restart.



7. Press hot key F12 to enter Boot Menu, and select EFI USB thumbdrive.

8. Under the EFI system, and choose the Removable BlockDevice group
(the Removable BlockDevice location is dynamic.)

E.g. In this figure, users should key in fs1: in Shell command line.

9. Use Type “CD” “Your package folder name” into EFI folder

```

fs0 :HardDisk - Alias hd10uq32768b2 blk0
    PciRoot(0x0)/Pci(0x17,0x0)/Sata(0x204,0x8000,0x1)/HD(2,GPT,01F61ABB-E5C4-4B1D-ADE6-6314B
E57FF,0xE1800,0x32000)
fs1 :Removable HardDisk - Alias hd7c0b blk1
    PciRoot(0x0)/Pci(0x14,0x0)/USB(0x2,0x0)/HD(1,MBR,0x00C5DE22,0x3F,0xE6CFC1)
blk0 :HardDisk - Alias hd10uq32768b2 fs0
    PciRoot(0x0)/Pci(0x17,0x0)/Sata(0x204,0x8000,0x1)/HD(2,GPT,01F61ABB-E5C4-4B1D-ADE6-6314B
E57FF,0xE1800,0x32000)
blk1 :Removable HardDisk - Alias hd7c0b fs1
    PciRoot(0x0)/Pci(0x14,0x0)/USB(0x2,0x0)/HD(1,MBR,0x00C5DE22,0x3F,0xE6CFC1)
blk2 :HardDisk - Alias (null)
    PciRoot(0x0)/Pci(0x17,0x0)/Sata(0x204,0x8000,0x1)/HD(1,GPT,1F70208E-422D-4456-BE6B-07DA3
A8E35,0x800,0xE1000)
blk3 :HardDisk - Alias (null)
    PciRoot(0x0)/Pci(0x17,0x0)/Sata(0x204,0x8000,0x1)/HD(3,GPT,EC00A577-B536-431C-90C7-E902
0F6B8,0x113800,0x8000)
blk4 :HardDisk - Alias (null)
    PciRoot(0x0)/Pci(0x17,0x0)/Sata(0x204,0x8000,0x1)/HD(4,GPT,F55179DB-1C9C-4900-AFB0-DC87
5CF61,0x11B800,0x3A26964F)
blk5 :BlockDevice - Alias (null)
    PciRoot(0x0)/Pci(0x17,0x0)/Sata(0x204,0x8000,0x1)
blk6 :Removable BlockDevice - Alias (null)
    PciRoot(0x0)/Pci(0x14,0x0)/USB(0x2,0x0)

Press ESC in 4 seconds to skip startup.nsh, any other key to continue.
Shell> fs1:

fs1:\> cd Service\EFI

fs1:\Service\EFI> _

```

10. Type flash.nsh, and use it to flash the ROMs.

```

fs0 :HardDisk - Alias hd10uq32768b2 blk0
    PciRoot(0x0)/Pci(0x17,0x0)/Sata(0x204,0x8000,0x1)/HD(2,GPT,01F61ABB-E5C4-4B1D-ADE6-6
E57FF,0xE1800,0x32000)
fs1 :Removable HardDisk - Alias hd7c0b blk1
    PciRoot(0x0)/Pci(0x14,0x0)/USB(0x2,0x0)/HD(1,MBR,0x00C5DE22,0x3F,0xE6CFC1)
blk0 :HardDisk - Alias hd10uq32768b2 fs0
    PciRoot(0x0)/Pci(0x17,0x0)/Sata(0x204,0x8000,0x1)/HD(2,GPT,01F61ABB-E5C4-4B1D-ADE6-6
E57FF,0xE1800,0x32000)
blk1 :Removable HardDisk - Alias hd7c0b fs1
    PciRoot(0x0)/Pci(0x14,0x0)/USB(0x2,0x0)/HD(1,MBR,0x00C5DE22,0x3F,0xE6CFC1)
blk2 :HardDisk - Alias (null)
    PciRoot(0x0)/Pci(0x17,0x0)/Sata(0x204,0x8000,0x1)/HD(1,GPT,1F70208E-422D-4456-BE6B-0
A8E35,0x800,0xE1000)
blk3 :HardDisk - Alias (null)
    PciRoot(0x0)/Pci(0x17,0x0)/Sata(0x204,0x8000,0x1)/HD(3,GPT,EC00A577-B536-431C-90C7-E
0F6B8,0x113800,0x8000)
blk4 :HardDisk - Alias (null)
    PciRoot(0x0)/Pci(0x17,0x0)/Sata(0x204,0x8000,0x1)/HD(4,GPT,F55179DB-1C9C-4900-AFB0-1
5CF61,0x11B800,0x3A26964F)
blk5 :BlockDevice - Alias (null)
    PciRoot(0x0)/Pci(0x17,0x0)/Sata(0x204,0x8000,0x1)
blk6 :Removable BlockDevice - Alias (null)
    PciRoot(0x0)/Pci(0x14,0x0)/USB(0x2,0x0)

Press ESC in 4 seconds to skip startup.nsh, any other key to continue.
Shell> fs1:

fs1:\> cd Service\EFI

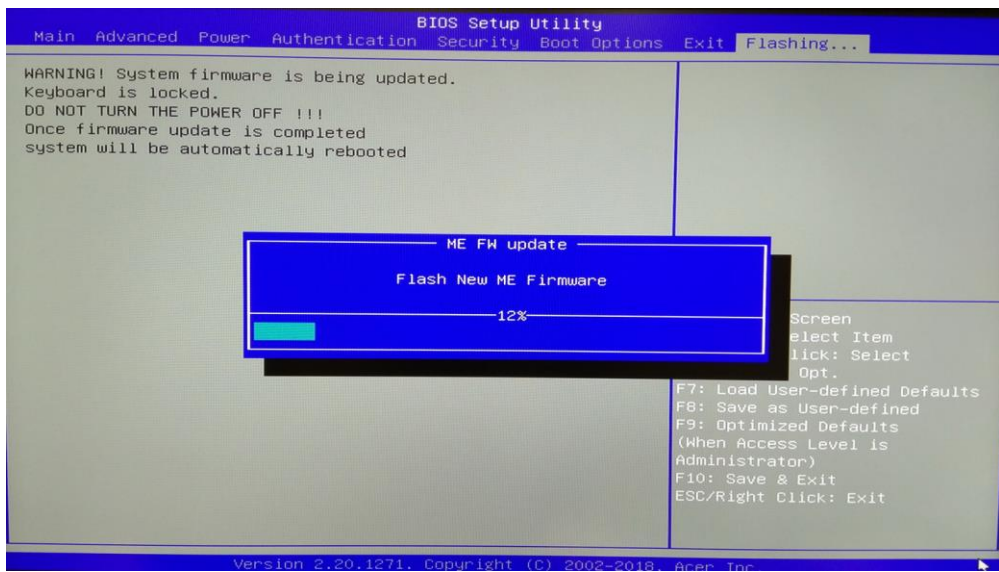
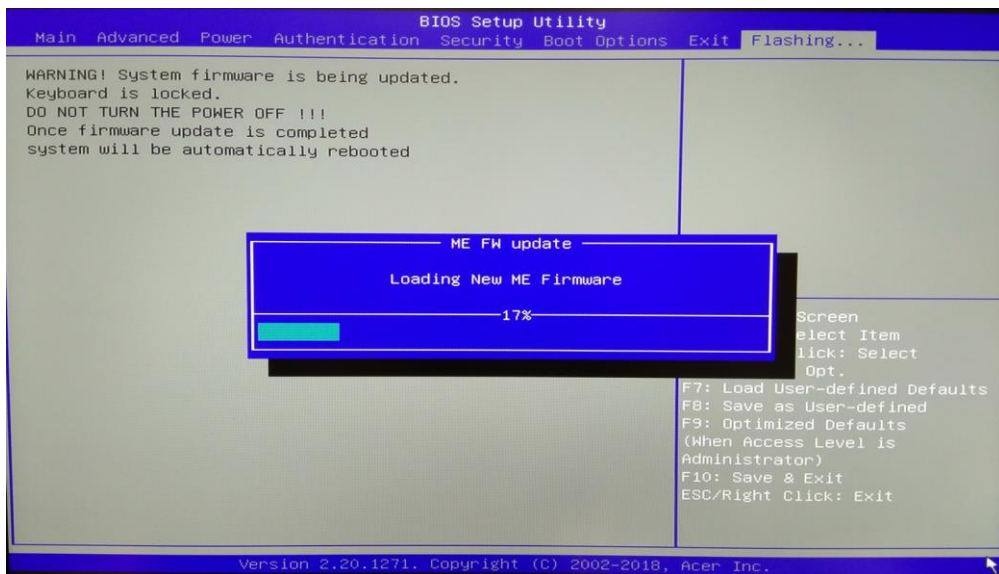
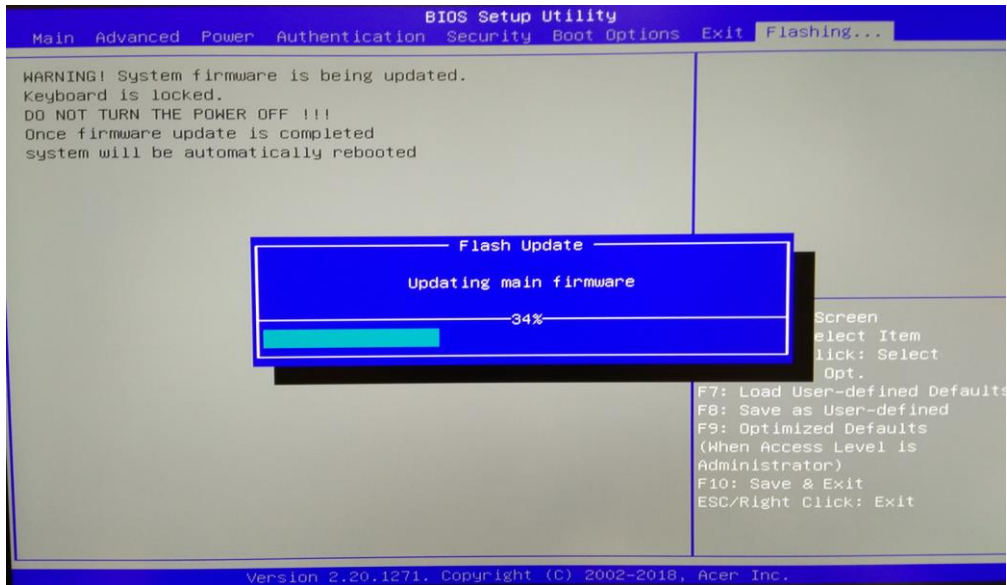
fs1:\Service\EFI> FLASH.nsh _

```

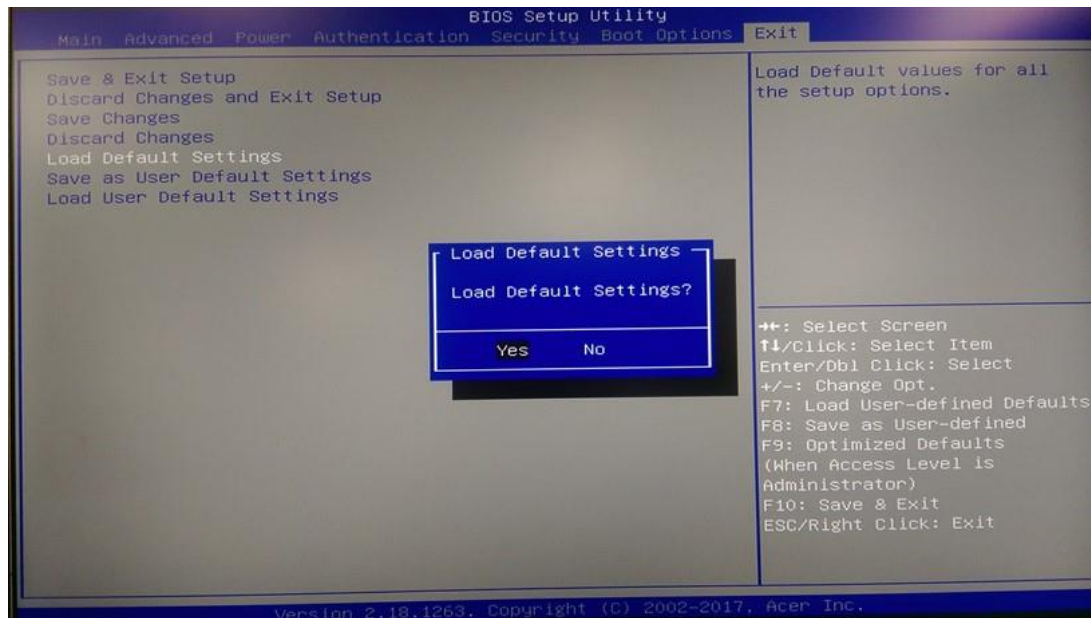
11. Wait Afuefi tools load BIOS, then press “Y” key to power off the system.

12. System Auto Power on into BIOS “Flashing...”

13. Start flash update automatically and wait it completed.



14. Press any key to reboot the system. (Recovery completed).
15. Boot system. Please press “Delete” to enter BIOS Setup Menu.
16. Select “Load Default Setting” and press “Enter”. Select “Yes” to load default settings.



17. Select “Save & Exit Setup” and press “Enter”.
18. Select “Yes” to restart.

